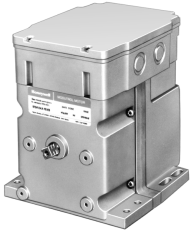


Motors and Actuators—Foot-Mounted

M9184; M9194 Modutrol IV Motors



Reversing, proportional motors used to operate dampers and valves.

- Replace M944A,C,D and M954 motors.
- Electronic drive circuit.
- Available with fixed or adjustable stroke.
- Can drive up to six Modutrol motors using 4074BYK Resistor Bag Assembly or 221508A Resistor Board Kit (see Accessories section).
- Interface modules available for series 70 (electronic) control.
- Internal actuator motor and circuitry operate from 24 Vac.

*TRADELINE models.

ORDER NUMBER	Electrical Ratings		Torque ^a		Timing	Stroke (degrees)	Includes	Comments	
	Power Supply	Power		lb-in.					N•m
		W	VA						
M9184A1019	24 Vac at 50/60 Hz	18	19	150	17.0	60	160	—	
M9184A1035						30	90		
M9184C1031				75	8.5	15 to 30	90 to 160		—
M9184D1005									—
*M9184D1013				150	17.0	30 to 60	220738A adapter bracket to match height of Mod III motors.		
*M9184D1021									Tapped shaft; 220738A adapter bracket to match height of Mod III motors.
M9184F1000				2 spdt auxiliary switches.					
M9184F1034				2 spdt auxiliary switches, tapped shaft.					
*M9194D1003				300	34.0	120 to 240	220738A adapter bracket to match height of Mod III motors.		
M9194E1000									1 spdt auxiliary switch.

^a Torque given is normal running torque. Breakaway torque rating is 2X normal running torque and is the maximum torque available to overcome occasional large loads such as a seized damper or valve. MOTOR NOT TO BE USED CONTINUOUSLY AT BREAKAWAY TORQUE RATING.

- Double-ended, 3/8 in. (10 mm) square crankshaft.
- Available with tapped (8-32) shafts for Flame Safeguard applications.

APPROVALS:

Underwriters Laboratories Inc. Listed: File E4436, Guide XAPX.
Canadian Standards Association Certified: File LR1620, Guide 400-E.

TEMPERATURE RATINGS:

Ambient: -40 F to +150 F (-40 C to +66 C) at 25% duty cycle.

ELECTRICAL RATINGS:

Auxiliary Switch Ratings (A):

One Contact ^a	120V	240V
Full Load	7.2	3.6
Locked Rotor	43.2	21.6

^a40 VA pilot duty, 120/240 Vac on opposite contact.